

Kansas Technical Professions



(785) 296-3053 • 900 S.W. Jackson Street, Suite 507 • Topeka, Kansas 66612-1257 • <http://www.kansas.gov/ksbtp/>

Volume 16 No. 1

January, February, March 2011

National Council of Examiners for Engineering and Surveying 2010 Annual Meeting

The 98th Annual Meeting of the National Council of Examiners for Engineering and Surveying (NCEES) was held August 18-21, 2010, in Denver Colorado. Attending from the Kansas State Board of Technical Professions were: George Barbee, Public Member; Steve Brosemer, L.S.; George Dean, P.E.; Forrest Erickson, P.E.; David Hoffman, Architect, Board Chair; Cecil Kingsley, P.E.; Thomas Mulinazzi, P.E., L.S., Ph.D.; Murray Rhodes, L.S., Public Member; and Jean Boline, Executive Director.

A major topic of discussion again this year was computer-based testing. The Council approved a motion which states that NCEES will prepare and administer the Fundamentals of Engineering and the Fundamentals of Surveying examinations via computer-based testing at the earliest feasible date.

The Council passed two important motions pertaining to surveying. First, they voted to have the appropriate committee(s) replace all references to "land surveyor" with "surveyor" and use the title "professional surveyor" and the initials "P.S." in NCEES manuals and governing documents. The other motion amends an NCEES policy statement to say that the Fundamentals of Surveying exam will test the knowledge obtained in a baccalaureate surveying degree.

Participants also took part in many forums and workshops where they heard details on council activities and shared concerns and ideas with participants from other state boards.

Joe Timms, P.E., West Virginia, will serve as NCEES

president for the 2010-2011 year. Serving as president-elect will be Dale Jans, P.E., South Dakota. Gene Dinkins, P.E., P.L.S., South Carolina, continues as treasurer. Replacing

Dale Jans as the Central Zone Vice-President is Nancy Gavlin, P.E., S.E., Illinois.



Attending the NCEES Annual Meeting were: Left to right, George Barbee, Public Member; George Dean, P.E.; Forrest Erickson, P.E.; David Hoffman, Architect and Board Chairperson; Tom Mulinazzi, P.E., L.S. PhD.; Murray Rhodes, L.S., Public Member; Cecil Kingsley, P.E.; and Steve Brosemer, L.S.

Inside this Issue

Disciplinary Action Taken by the Board	3
2010 CLARB Annual Meeting	5
New KSBTP Certificates of Authorization.	5
Congratulations.	5
FE & FS Exams Move to Computer-Based Formats	6
Cancelled License Lists.	6
KSBTP Computation of Credit Chart	7
Schedule for Reporting Continuing Education	8
In Memoriam	8

Licensure Recognition Ceremony

The Board of Technical Professions is pleased to announce we are partnering with the Kansas Society of Professional Engineers, Kansas Society of Land Surveyors, Association of Environmental and Engineering Geologists, American Institute of Architects in Kansas, and the Prairie Gateway Chapter of the American Society of Landscape Architects to hold a Licensure Recognition Ceremony on February 4, 2011 at 3:00 p.m. to honor those individuals who passed their licensing exams from July 2010 through December 2010. The ceremony will be held in the Auditorium at Memorial Hall, 10th and Jackson in Topeka.

New licensees will receive an invitation inviting them and their families to attend the ceremony.

The Board would encourage supervisors, mentors, and members of their firms to come help these new licensees celebrate this momentous step in their professional careers.

Land Surveyors - REMEMBER New Continuing Education Requirement

Remember with the renewal of licenses expiring March 31, 2011, each land surveyor must have two (2) hours of continuing education on the Kansas minimum standards. These hours are part of the 30 hours of Continuing Education required for license renewal. One available source is the KSLs web site at www.ksls.com for an on-line course.

Renewal Fees to be Reduced

To reflect their sensitivity to the current economic conditions, the Kansas State Board of Technical Professions has reduced biennial license fees. Beginning with the renewal of Landscape Architect licenses which expire on December 31, 2010, fees are reduced from the current \$90 to \$70. To be consistent with the other disciplines, the biennial fee for Engineers, Architects, Land Surveyors and Geologists will be reduced the same amount, from the current \$90 to \$70. Certificates of Authorization are reduced from the current \$120 to \$95. The individual license renewal fee for age 70 and older will remain at the current level of \$5. These fees will remain at this reduced rate for the foreseeable future.

current resident or



Kansas Board of Technical Professions
 900 Jackson St. Suite 507
 Topeka, KS 66612-1257
 (785) 296-3053
 www.kansas.gov/ksbtp

Office Hours

8 a.m.–4:30 p.m.

Please leave a message on our voice mail system at other times.

Office Closings

Our office will be closed on the following dates:

New Year's Day Friday, December 31, 2010
 Martin Luther King Day Monday, January 17, 2011
 Memorial Day Monday, May 30, 2011
 Independence Day Monday July 4, 2011
 Labor Day Monday, September 5, 2011
 Veterans Day Friday, November 11, 2011
 Thanksgiving Day Thursday, November 24, 2011
 Friday, November 25, 2011
 Christmas Monday, December 26, 2011
 New Year's Day Monday, January 2, 2012

Upcoming Meetings

Check our web site for updated information on Board meetings.

AGENCY MISSION

To provide maximum protection of the health, safety and welfare of the people of Kansas by assuring that the practice of engineering, architecture, land surveying, landscape architecture and geology in the state is carried out only by those persons who are proven to be qualified as prescribed by the statutes and rules and regulations of the Board of Technical Professions.

Programs Established To Assist With Agency Mission

Licensing, monitoring and regulating of technical professions:

- Examine and certify Intern Engineers, Surveyors and Geologists
- License, monitor and discipline Engineers
- License, monitor and discipline Architects
- License, monitor and discipline Land Surveyors
- License, monitor and discipline Landscape Architects
- License, monitor and discipline Geologists
- Licensing of Business Entities

BOARD STAFF

Routing your calls to the numbers below will allow our staff to better assist you by answering questions about the areas they handle. You may also leave a message on our voice mail if we are unavailable. We will return your call promptly.

<u>Call</u> (785)-296-3053	<u>For Information On:</u> General information questions, Address changes
Marilyn (785)-296-4400	License renewals, reinstatements, accounts payable and receivable
Mary Leigh (785)-296-4800	Business Entities, Certificate of Authorization
Vicky (785)-296-3052	Application status, licensure qualifications and foreign degree evaluations
Carol (785)-296-8612	Examinations, Verifications Continuing Education

MEMBERS OF THE BOARD OF TECHNICAL PROFESSIONS

David Hoffman, Arch., Chair Wichita, KS Architect Member	George R. Dean, P.E. Wichita, KS Engineer Member	Thomas Mulinazzi, P.E., L.S., Ph.D Lawrence, KS Engineer/Land Surveyor Member
Philip Meyer, L.A., Vice-Chair Wichita, KS Landscape Architect Member	Forrest Erickson, P.E. Shawnee, KS Engineer Member	Wendy Ornelas, Arch. Manhattan, KS Architect Member
Timothy Sloan, L.S., Secretary Manhattan, KS Land Surveyor Member	Cecil M. Kingsley, P.E. Lawrence, KS Engineer Member	Murray Rhodes, L.S. Kansas City, KS Public Member
George Barbee Topeka, KS Public Member	Vincent Mancini, Arch. Garden City, KS Architect Member	Mark Bennett, Jr. Board Attorney
Steven Brosemer, L.S. Emporia, KS Land Surveyor Member	Richard Moberly, Geologist DeSoto, KS Geologist Member	Jean Boline Executive Director

Disclaimer

Kansas Technical Professions is published quarterly by the Kansas Board of Technical Professions. The news articles contained in this publication should be treated as official communications from the Kansas Board of Technical Professions. The providers are responsible for offering quality programs under the criteria as established by the Board. Complaints regarding continuing education programs may be reported directly to the Kansas Board of Technical Professions. For information on these educational offerings, contact the sponsor, not the Board.

Advertising

Advertising is not solicited or endorsed by the Kansas Board of Technical Professions.

For advertising rates and information, contact Arthur L. Davis Publishing Agency, Inc., 517 Washington St., P.O. Box 216, Cedar Falls, IA 50613, (800) 626-4081, sales@aldpub.com. Responsibility for advertising is limited to corrections in the next issue or refund of price of advertisement. Publisher is not responsible for errors in printing of schedule. The Kansas Board of Technical Professions and the Arthur L. Davis Publishing Agency, Inc. reserve the right to reject advertising. The Kansas Board of Technical Professions and the Arthur L. Davis Publishing Agency, Inc. shall not be liable for any consequences resulting from purchase or use of advertisers' products from the advertisers' opinions, expressed or reported, or the claims made herein.

DISCIPLINARY ACTION TAKEN BY THE BOARD

Disclaimer: Every effort has been made to ensure that the following enforcement information is correct; however, this information should not be relied upon without verification from the Kansas board office. It should be noted that the names of business entities and individuals listed may be similar to the names of parties who have not had enforcement actions taken against them. Disciplinary orders are public information and copies may be obtained by contacting the board office.



Mark L. Bennett Jr.

IN THE MATTER OF CHARLES LAHTI, UNLICENSED AND JMC ENGINEERING (UK) LTD., UNLICENSED

Summary: This matter first came to the attention of the Kansas State Board of Technical Professions when the Respondent, Charles Lahti, filed a complaint with the Board against JMC Engineering, LLC alleging that in 2006 and 2007 JMC Engineering, LLC was practicing engineering in the State of Kansas without a Certificate of Authorization as required by State law. JMC Engineering, LLC is a subsidiary of JMC Engineering (UK), Ltd. While Charles Lahti is licensed as an Engineer in the States of Minnesota and Wisconsin, he has never been licensed to practice engineering in the State of Kansas.

In July 2006, JMC Engineering (UK), Ltd. contracted with Goodland Energy Resources to engineer and supervise the construction of a Co-Gen power plant. The Co-Gen contract provided that JMC Engineering (UK), Ltd. would provide the engineering services for the power plant project and JMC Engineering (UK), Ltd. then assigned the contract to JMC Engineering LLC to actually provide the engineering work which was required. JMC Engineering LLC then retained the services of Charles Lahti to provide certain aspects of the design and engineering for the facility. The professional services contract entered into between Mr. Lahti and JMC Engineering LLC provided that:

- (a) Lahti's position would be that of an Electrical Engineer for the Power Plant Project in Goodland.
- (b) The duties and responsibilities of Mr. Lahti were to carry out electrical engineering of all elements of the project.
- (c) Mr. Lahti agreed to perform the work with the degree of care, skill and diligence normally provided in the performance of electrical engineering services relating to projects of nature similar to that contemplated by the contract.
- (d) JMC Engineering LLC's engineering professional liability insurance would cover the work of Mr. Lahti.
- (e) Mr. Lahti in his work for JMC would be operating as an independent contractor and not as an agent or employee of JMC Engineering LLC.
- (f) The scope of the work described the position filled by Lahti as an electrical engineer for the GER

Power Plant Project in Goodland and his duties and responsibilities were to carry out electrical engineering of all elements of the project.

Following receipt of the Report of Alleged Violation Form from Mr. Lahti, the Complaint Committee of the Board directed that an investigation be conducted for the purpose of determining whether or not JMC Engineering (UK) Ltd and/or JMC Engineering LLC had engaged in the practice of engineering in the State of Kansas without proper licensure or a Certificate of Authorization. In the course of that investigation, the Board's investigator determined that not only had JMC Engineering (UK) Ltd and JMC Engineering LLC engaged in the practice of engineering in the State of Kansas without proper licensure or certification but also determined that Mr. Lahti had engaged in the practice of engineering in the State of Kansas without benefit of licensure. As a result thereof, a formal complaint was filed against all three respondents alleging that they had engaged in the practice of engineering in the State of Kansas without proper certification or licensure.

Board Action: Following the completion of the investigation, a formal hearing regarding the allegations set out in the complaint was scheduled before a hearing panel of the Board. The hearing was held on May 3 and 4, 2010. Following the hearing, the panel made the following findings:

1. By virtue of the Co-Gen Contract and the use of the term "engineering" in the company name, JMC Engineering (UK) Ltd offered to practice engineering, held itself out and represented itself as authorized to practice engineering at a time when it was not authorized to do so in violation of the Kansas statutes.
2. By virtue of the representations made by its agents in 2006 and 2007, the provision in the Lahti Professional Services Contract assuring that the company's engineering professional liability insurance would cover Lahti's services, and use of the term "engineering" in the company name, JMC Engineering LLC held itself out and represented itself as authorized to practice engineering at a time when it was not authorized to do so.
3. The evidence is clear and convincing that Lahti offered to provide engineering services, held himself out and represented himself as a professional engineer by virtue of his work with the GER Power Plant Project at a time when he was not licensed to practice engineering in the State of Kansas.
4. That Mr. Lahti could not avail himself of the exemptions in KSA 74-7035(a) and (b) regarding the practice of engineering.

As a result of those findings, the Board assessed a civil penalty of \$1,000 and attorney fees and costs in

the amount of \$4,000 for a total of \$5,000 against JMC Engineering (UK) Ltd, which is the maximum amount allowed by statute for a first violation. Additionally, the panel assessed an identical fine and cost totaling \$5,000 against JMC Engineering LLC. Further, with regards to Charles Lahti, the panel assessed a civil penalty of \$500 and attorney fees in the amount of \$4,000 for a total fine and costs of \$4,500.

Status: *With regard to the fine and costs assessed against the three respondents, JMC Engineering (UK) Ltd. and JMC Engineering LLC have paid the fine and costs assessed against each of them. As of this date, Charles Lahti has not paid the fine and costs assessed against him and the Board is in the process of preparing and filing an action designed to collect that fine and cost.*

IN THE MATTER OF STEPHEN PHILLIP MASLAN, P.E.

Summary: In March of 2010, the Kansas State Board of Technical Professions became aware of the fact that disciplinary action had been taken against Mr. Maslan by the Missouri Board For Architects, Engineers, Land Surveyors and Landscape Architects.

Board Action: Following an investigation of that matter, the Complaint Committee of the Board determined that the discipline imposed in the State of Missouri against Mr. Maslan's Missouri license would also be a basis for discipline to be imposed by the Kansas Board pursuant to the Kansas Board's rules and regulations 66-6-4(s), which provides in part as follows:

"Conviction of a felony or the revocation or suspension of a professional license by another jurisdiction, if for a cause that in the State of Kansas would constitute a violation of Kansas Law or these regulations, shall be grounds for a charge of violation of these regulations."

Following the completion of the investigation and the determination by the Complaint Committee of the Board that Mr. Maslan had committed violations in the State of Missouri that would also constitute violations of the laws of the State of Kansas and/or the Kansas Board's rules and regulations, Mr. Maslan and the Kansas State Board of Technical Professions entered into a Settlement Agreement and Consent Order which included the following provisions:

1. That Respondent will immediately be placed on probation with regard to his practice of engineering in the State of Kansas until such time as he has successfully completed the probation requirements as set forth in the Missouri Order.

Disciplinary Action continued on page 4

Disciplinary Action continued from page 3

2. In addition to the conditions set forth in the Missouri Order, Mr. Maslan shall:
 - A. Not engage in the practice of architecture in the State of Kansas.
 - B. Keep the Kansas State Board of Technical Professions apprised at all times in writing of each of his current employers, as well as his addresses and telephone numbers for each place of residence and business and shall notify the Board in writing within 10 days of any change in this information. Mr. Maslan shall be responsible for insuring that such notification is received by the Kansas State Board of Technical Professions.
 - C. Mr. Maslan shall timely renew his Kansas license and timely pay all fees required for license renewal and comply with all other requirements necessary to maintain his license in a current and active state.
 - D. If at any time within the disciplinary period, Mr. Maslan changes residences; ceases to be currently licensed in Kansas under the provisions of KSA 74-7001, et seq. or fails to keep the Kansas State Board of Technical Professions advised of all current places of residence or business, the time of absence, or unlicensed status or unknown whereabouts, shall toll the disciplinary period and shall not be deemed or taken as any part of the disciplinary period.
 - E. Mr. Maslan shall comply with all provisions of KSA 74-7001, et seq; all rules and regulations of the Board; and all local, state, and federal laws. "State" as used herein refers to the State of Kansas and all other states and territories of the United States.
 - F. Mr. Maslan shall appear before the Board or its representative for a personal interview upon the Board's request.
 - G. Mr. Maslan shall accept and comply with unannounced visits from the Kansas State Board of Technical Professions' representatives to monitor his compliance with the terms and conditions of his discipline.
 - H. During the disciplinary period, Mr. Maslan shall submit written reports to the Kansas State Board of Technical Professions, as well as copies of the reports required to be submitted to the Missouri Board no later than January 1, April 1, July 1 and October 1 of each year, stating truthfully whether there has been compliance with all of the conditions of the Missouri Settlement Agreement and the Kansas Settlement Agreement. It is Mr. Maslan's responsibility to ensure that the reports are submitted by the dates set forth above. The

first such report shall be submitted on or before the first day of the first full quarter following the effective date of this agreement.

- I. During the disciplinary period, Mr. Maslan shall submit to the Kansas State Board of Technical Professions, no later than January 1, April 1, July 1 and October 1 of each year, a comprehensive list of all Kansas engineering projects worked on for the previous three months. The comprehensive list shall identify the projects worked on by date, client, location of the project and a brief description of the project and work performed. The first such report shall be submitted on or before the first day of the first full quarter following the effective date of this agreement. Additionally, Mr. Maslan shall provide to the Kansas State Board of Technical Professions a copy of the list of all Missouri engineering projects which he has participated in during the disciplinary period no later than the dates required for their submission to the Missouri Board. Further, when requested by the Kansas State Board of Technical Professions, Mr. Maslan shall submit, without delay, copies of all documents related to a specific project(s) for review by the Kansas State Board of Technical Professions, including, but not limited to, drawings, calculations, and notes. If no work is completed during the reporting period, Mr. Maslan must so advise the Kansas State Board of Technical Professions in writing in the same time-frame and manner as set forth above in this paragraph. It is Mr. Maslan's responsibility to ensure that the lists are submitted by the dates set forth above.
3. Upon the expiration of the disciplinary period, Mr. Maslan's Kansas license shall be fully restored if all requirements of law have been satisfied; provided, however, that in the event the Board determines that Maslan has violated any term or condition of this Settlement Agreement or the Settlement Agreement entered into with the Missouri Board, the Kansas Board may, in its discretion, after an evidentiary hearing, vacate and set aside the discipline imposed herein and may suspend, revoke or otherwise lawfully discipline Mr. Maslan's Kansas license as a professional engineer.
4. If any alleged violation of this Settlement Agreement occurs during the disciplinary period, the parties agree that the Kansas Board may choose to conduct a hearing before it either during the disciplinary period, or as soon thereafter as a hearing can be held, to determine whether a violation occurred and, if so, may impose further discipline. Mr. Maslan agrees and stipulates that the Board has continuing jurisdiction to hold a hearing to determine if a violation of this settlement agreement has occurred.

Status: *Mr. Maslan's license to practice engineering in the State of Kansas has been placed on probation until all terms of the Settlement Agreement have been met.*

**IN THE MATTER OF STUART L. OWSLEY,
ARCHITECT**

Summary: Stuart L. Owsley is licensed as an architect in the State of Kansas and has been so licensed for many years. During the course of Mr. Owsley's practice of architecture, the Kansas State Board of Technical Professions received a Report of Alleged Violation Form regarding Mr. Owsley's practice. That report indicated that Mr. Owsley had signed engineering plans consisting of structural plans and specifications, mechanical plans and specifications and site plans and specifications for a project in Fort Scott, Kansas and that he had sealed said

engineering plans with his architectural seal and had signed the structural, mechanical and site plans for the project in violation of the provisions of KSA 74-7001, KSA 74-7026(4), KSA 74-7029(8) and KAR 66-6-4(d).

Board Action: Following an investigation of the matter in which it was determined that Mr. Owsley had engaged in the unlicensed practice of engineering in the State of Kansas, the Kansas State Board of Technical Professions and Mr. Owsley entered into a Settlement Agreement and Consent Order which included the following:

1. Respondent, Stuart L. Owsley, is licensed to practice architecture in the State of Kansas but is not licensed and does not hold a Certificate of Authorization authorizing him to practice the technical profession of engineering in the State of Kansas.
2. In the course of respondent's practice of architecture, the respondent prepared a set of architectural plans and specifications for a project denominated as a new theater for H2h, Inc. in Ft. Scott, Kansas.
3. In the course of the preparation of the plans for the H2h, Inc. project in Ft. Scott, the respondent Stuart Owsley sealed with his architectural seal and signed the engineering plans for said project which included civil, structural, mechanical or electrical design sheets.
4. In its Complaint, the Board alleges that the respondent engaged in the practice engineering in the State of Kansas as that term is defined in the provisions of K.S.A. 74-7003(i) when he prepared the civil, structural, mechanical and electrical design sheets for the project and sealed them with his architectural seal.
5. The Board claims that the alleged actions of the respondent as set forth above, constitute grounds for the Kansas State Board of Technical Professions to take disciplinary action against the respondent, Stuart L. Owsley, pursuant to the provisions of K.S.A. 74-7001, K.S.A. 74-7029 and K.S.A. 74-7039 and to assess a civil fine and the costs incurred by the Kansas State Board of Technical Professions in prosecuting this matter including investigative costs and attorney fees pursuant to the provisions of K.S.A. 74-7026 and K.S.A. 74-7039.
6. Respondent has agreed to not contest the allegations but to avoid the costs of litigation agrees to enter into this Settlement Agreement and Consent Order for the purposes of resolving all allegations and disputes between the parties.
7. Respondent has previously been disciplined by the Kansas State Board of Technical Professions in a matter entitled "Kansas State Board of Technical Professions v. Stuart L. Owsley; Case No. 00-05". In that matter, Mr. Owsley admitted that he had engaged in the practice of engineering as defined in the Kansas statutes in his preparation of the electrical plan for the Tri-State Building in Pittsburg, Kansas at a time when he was not licensed to practice the technical profession of engineering. As a result of that Settlement Agreement and Consent Order entered in case number 00-05, Mr. Owsley agreed to "immediately cease and desist in the practice of engineering in the State of Kansas until such time as he is properly licensed to do so" and further agreed to pay a fine in the amount of \$500 plus the Board's investigative fees and attorney fees incurred in the prosecution of the matter.

As a result of these factual determinations, the Board and Mr. Owsley agreed to the following terms of settlement:

1. Stuart L. Owsley does not contest the allegation that he engaged in the practice of the technical profession of engineering and stipulated that based on the evidence set out in the complaint; the Board's hearing panel would find that a violation had occurred.
2. Mr. Owsley shall pay a \$3,500.00 civil penalty, which amount shall include a \$1,500 fine and reimbursement of the Board's expenses incurred in the investigation and prosecution of this matter in the amount of \$2,000.
3. Mr. Owsley shall immediately cease and desist from providing civil, structural, mechanical or electrical design services for any project. Additionally, Mr. Owsley shall immediately cease and desist from sealing or signing any civil, structural, mechanical or electrical design sheets for any project with his architectural seal.

Status: *Mr. Owsley has met all of the terms and conditions of the settlement agreement and consent order and the case file has been closed.*

**ALLEGED
VIOLATION
REPORT FORM
available at
www.kansas.gov/ksbtp**

2010 CLARB Annual Meeting

Philip J. Meyer, L.A.
KSBTP Landscape Architect Board Member
ASLA

The Council of Landscape Architectural Registration Board (CLARB) held its annual meeting August 26, 27, and 28 in Baltimore, Maryland. This year's meeting was attended by 41 of the 48 states and provinces that are members of the CLARB organization. Attending for the State of Kansas were Philip J. Meyer, L.A. member, David Hoffman, Chair of KSBTP and Jean Boline, Executive Director for the board.

The meeting started Wednesday with the Board of Directors meeting. On Thursday morning a Member Board Executive meeting was held which discussed local issues and challenges facing each board. Thursday afternoon CLARB held several education sessions open to all members covering the following topics; New Member Orientation; Idea Swap – "State of the Boards;" and Licensure Defense Case Study – Developing Strategic Partnerships for Successful Results. These education sessions were well attended by the CLARB membership with lots of positive dialogue.

On Friday morning the session started with an update on ALSA activities by Gary Scott, President of ASLA. Following that we had a special presentation from ERIN Research, Inc. covering the "Definition of Public Welfare." This is a special research project sponsored by CLARB to help define "Public Welfare," and is being done to strengthen and defend "Public Welfare" as a reason and purpose for licensure. Mid-morning Joel Albizo, Executive Director of CLARB gave an update on the Progress Against Strategic Goals. Dennis Mersky, CLARB Treasurer, gave a Treasurer Report for the current status of 2010 and a projection of 2011. Jim Penrod, Deputy Executive Director, gave an update on the Council Record Service and an update on the Task Analysis. Dennis Wilkinson, Past President, presented the Officer Ballot of Nominees for CLARB.

Friday afternoon everyone broke into regional meetings. We reviewed new issues and challenges that each state may be facing. We then discussed specific topics presented by CLARB to obtain more regional input such as "Why should LA's be licensed?" "CLARB Certification, how does it benefit your state?" "Continuing Education—what are challenges and benefits for more uniformity in CEU's?" As always, these questions brought up a good dialogue between the representatives in attendance. Kansas is part of Region IV which also consists of Colorado, Nebraska, New Mexico, North Dakota, South Dakota, Oklahoma and Wyoming.

Saturday morning we reconvened in General Session. We started with an update from the President, followed by a summary of the questions and topics discussed at each of the five Regional meetings by each Regional Director. We were given the results of the election results for the new Officers. Ian Wasson, from Vancouver, British Columbia will now serve as President of CLARB for the next year.



Attending the Annual CLARB meeting were left, David Hoffman, Architect, Board Chair; and Phil Meyer, L.A., Board Vice-Chair.

New Application Forms Available On The Website

New application forms for exams and license by reciprocity/comity are available on the Board's website, www.kansas.gov/ksbtp. These new forms are in a format which allows an applicant to enter their information in a fill-in box directly on the form. Applications cannot be saved to your computer and must be printed. Please destroy any older forms which you may have on hand in your office.

New KSBTP Certificates of Authorization

From August 16, 2010 to November 16, 2010

Architecture

Betsch Associates, Inc.	A-790
Intelligent Line A+D, LLC	A-791
Davidson Architecture & Engineering LLC	A-792
Guenther Mills Keating Architects, Inc.	A-793
JSO Services, LLC	A-794
PSA-Dewberry Inc.	A-795
OPUS AE Group, Inc.	A-796
Curtis Group Architects Ltd.	A-797
AE COM Technical Services, Inc.	A-798
Field Paoli Architects, A Professional Corporation	A-799
Mithun, Inc.	A-800

Professional Engineering

Lamar Dunn & Associates, Inc.	E-1810
Banester Engineering, Inc.	E-1811
Abentey Hugoton General Partnership	E-1812
McCurdy Engineers, LLC	E-1813
RLC, LLC	E-1814
WET Engineering, Inc.	E-1815
National Design Build Services, LLC	E-1816
Treanor Architects, P.A.	E-1817
Pike Energy Solutions, LLC	E-1818
Davidson Architecture & Engineering, LLC	E-1819
Applied Pharmaceutical, Environmental & Chemical Engineering	E-1820
AE Resources Group, Inc.	E-1821
Advatech, LLC	E-1822
Applied Research Associates, Inc.	E-1823
River Consulting	E-1824
Hipp Engineering and Consulting, Inc.	E-1825
Hayman Residential Engineering Services, Inc.	E-1826
Talon/LPE	E-1827
Dixon Engineering Inc.	E-1828
OPUS AE Group, Inc.	E-1829

Groundwater & Environmental Services Inc.	E-1830
Schmidt & Stacy Consulting Engineers, Inc.	E-1831
360 Energy Solutions, LLC	E-1832
PSF Mechanical, Inc.	E-1833
James Johnston & Associates, Inc. dba JJA, Inc.	E-1834
CDI-Infrastructure, LLC dba L R Kimball	E-1835
Standard Testing & Engineering Co.	E-1836
KZF Design Inc.	E-1837
Anthony Construction Management, Inc.	E-1838
Hood EE Consulting, PLLC	E-1839
Lets Volver International, LLC	E-1840
Three Sixty Engineering, Inc.	E-1841
Solutions AEC, LLC	E-1842
Mead & Hunt, Inc.	E-1843
Armand Consulting Inc.	E-1844

Land Surveying

Green Western, LLC	LS-227
Alfred Benesch & Company	LS-228
MIDCO Services, LLC	LS-229
Freeland & Associates, Inc.	LS-230

Geology

Hyde Environmental, Inc.	G-105
Eddings Environmental Consultants, LLC	G-106
Haley & Aldrich, Inc.	G-107

Reinstatements

McDonald & Warger, Inc.	E-230
Eskilson Engineering, Inc.	E-426

Certificate of Authorization Name Changes

Crafton, Tull, Sparks & Associates	E-341; A-515
TO Crafton, Tull & Associates, Inc.	
The Benham Companies, LLC	E-783; A-415; G-43
TO SAIC Energy, Environment & Infrastructure, LLC	

CONGRATULATIONS!

The Kansas State Board of Technical Professions is pleased to announce the following individuals have successfully passed all parts of their Technical Professional examinations and are now licensed.

Architect Registration Examination

NAME	Home City	State
Karl B. Albach	Wichita	KS
Sterling J. Curry	Wichita	KS
Michael K. Davis	San Antonio	TX
Peter J. Hauff	Emporia	KS
Clint B. Hibbs	Manhattan	KS
Stacey Z. Keller	Topeka	KS
Miranda L. Kumler	Overland Park	KS
Adam Rich	Overland Park	KS
Basil D. Sherman II	Overland Park	KS
Edward J. Wilson	Wichita	KS
Jason M. Worley	Wichita	KS

CONGRATULATIONS!

The Kansas State Board of Technical Professions is pleased to announce the following individuals have successfully passed all parts of their Technical Professional examinations and are now licensed.

Landscape Architect Registration Examination

NAME	Home City	State
Lara L. Fackrell	Independence	MO

Kansas Board of Technical Professions Current Licensees

as of: 10/26/2010

Profession	KS Resident	Non-Resident	Total
Architects	915	1,696	2,611
Professional Engineers	4,202	6,337	10,539
Landscape Architects	145	238	383
Land Surveyors	466	300	766
Geologists	382	246	628
Total	6,110	8,817	14,927

Business Entities	KS Resident	Non-Resident	Total
Architecture	125	387	512
Professional Engineering	261	1024	1285
Landscape Architecture	28	25	53
Land Surveying	69	93	162
Geology	36	55	91
Total	519	1,584	2,103

FE and FS Exams Begin Gradual Move To Computer-Based Format

The state licensing boards that compose NCEES, the organization that develops and administers the exams used for engineering and surveying licensure throughout the United States, have voted to begin converting the FE and FS exams to a computer-based format.

The decision was made during the August 2010 NCEES Annual Meeting in Denver. It followed a prolonged study by a special task force convened to consider the issue and share its findings with the organization.

The transition toward computer-based exam delivery will not take place overnight, said NCEES Executive Director Jerry Carter. "The language approved by the Council includes the phrase 'at the earliest feasible date,' which means that NCEES exam writers and staff will be involved in a process that includes adapting exam item banks, selecting vendors, and communicating with licensing boards and examinees before we can begin offering the exams via computer," said Carter. "We anticipate it will be at least two years before FE and FS candidates begin taking the exams at computer-testing centers."

Among the reasons given by the NCEES Computer-Based Testing Task Force for its recommendation to convert the exams to a computer-based format include greater scheduling flexibility for candidates, more uniformity in testing conditions, and enhanced security for exam content. The vote to move toward computer-based testing for the FE and FS exams was unanimous.

The FE exam is designed for college engineering seniors who intend to pursue a P.E. license. Nearly 50,000 examinees took the FE exam during the 2009-10 academic year, which included October and April administrations. The FS exam is a similar exam designed for those beginning the process toward professional surveying licensure. The PE and PS exams, which engineering and surveying candidates are also required to take after completing work experience requirements, will continue to be paper-and-pencil exams for the foreseeable future.

KSBTP Cancelled Architect Licenses

For Non-renewal on June 30, 2010

Name	License No.
Jeffrey Peter Agnes	5530
Anthony J. Albano	5718
John L. Allen	4393
W. Mack Allen	741
Glenn W. Anderson	5193
Norman G. Anschutz	2292
Michael Aragona	4519
Charles S. Ash	251
Jonathan Bailey	4638
Donald Waldo Bain Jr.	3645
Nathan D. Baker	5096
Fred W. Ballard	5143
Richard Barger	3948
Dennis L. Batty	2469
Terry K. Baumeister	4088
Patricia S. Beets	3515
Richard M. Belk	2848
John Christian Bell	3328
Earl E. Benson	541
George D. Berardi	3786
Arthur William Boice Jr.	2969
Rod L. Booze	5314
James Bowen	4260
Fred W. Braht	1464
Duane Kevin Bratt	3095
Philip M. Broussard	3123
Mark R. Bruno	5643
Robert Wesley Burk Jr.	2411
Richard Bradley Buss	2413
Donald Perry Butcher	2246
Stephen B. Byram	3099
Nicholas K. Cade	4963
Laura L. Caffey	4986
Joseph P. Cheesebrough	1020
Mel Choy	5629
Jerry W. Clark	4883
Kevin A. Clark	5699
Robert Clement	5350
Richard J. Conklin	1314
James H. Croft	5071
Roger Kyle Crosby	4441
Leonard Cubellis	5037
Charles E. Cunningham	4913
Shellie A. Curry	5399
David Scott Daining	4454
James Paul Darnell III	4884
John Lawrence Daw	747
Ronald R. Decker	5753
Earl L. Devore	1611
William Brent Dickens	4837
Wolfgang B. Dorsch	4797
Russell M. Echols	4917
Wayne W. Enderling	4024
John P. Engelhardt	4396
George F. Esser	5532
Steven M Foote	5220
George W. Franklin	814

Name	License No.
Richard H. Frederkind	5160
Ronald G. Galmore	5533
John N. Gillam Jr.	922
Ben J. Goforth	4209
Cary C. Goodman	2151
William Gotsdiner	5198
Terrence E. Granger	5549
Bruce L. Green	5498
Jeffrey K. Griffin	5125
James R. Grover	4948
Joseph Allen Gusse	5658
Jerry L. Hagerman	5309
Michael W. Halstead	5185
Richard Harper	5644
Aaron J. Harte	5665
James O. Hastings, Jr.	4270
Everett Hatcher	4140
Gale L. Hatcher	1445
Richard John Hazy	4618
James R. Heil	3870
April Eileen Hensley	4420
Richard S. Hintz	5114
Charles M. Hodges	3471
Samuel E. Holder	5127
William Whittaker Holmes	5162
Joedy Jay Hoogner	2178
Mark E. Hoskin	5508
David A. Houser	505
David C. Hudson	4629
Michael Savoie Hunley	5257
Leon R. Hurley	5150
David W. Irvin	2314
Leroy James	5326
Jere Lee Johnson	928
Burke A. Jones	3969
Russell A. Jones	430
Daniel J. Juba	5660
Steven B. P. Kalkman	5013
Farooq S. Karim	5327
William A. Keene	1978
Jason E Kersley	5261
Stacey M. Kersley	5382
Joseph Elwood King	2183
Lucille C. King	3200
Hanan A. Kivett	3363
Stephen Klimas	5606
James M Koenig	4936
Zenon Kurdziel	4311
Steven W. Langford	5280
Scott Lee Lasky	5745
Bruce E. Law	188
Peter Lazzara	5684
Vincent C. LaTona	2735
Marc Andre Lemoine	3840
Stephen Kuo-Hung Li	3252
Carrol E. Littlejohn	1149
Sarah Lynn Schoening	4066

Is Your KSBTP Statute and Rule Book Outdated?



For the most up-to-date copy of the law and rules, please go to the KSBTP website:

<http://www.kansas.gov/ksbtp>

Go to "[Other Links to items of general interest](#)", and click on *KSBTP Statutes* and *KSBTP Rules and Regulations*.

KSBTP Cancelled Geologist Licenses

For Non-Renewal on June 30, 2010

Name	License No.
Macklin Marc Armstrong	743
Bradley Alan Barquest	398
Andrew Tobias Benoit	679
Thomas E. Blair	212
Byron J. Bland	401
Kevin Courtney Davis	291
Patrick Joseph Deenihan	234
Donna Marie DeCarlo	406
Micheal Wayne Dixon	267
George R. A. Fields	606
Elizabeth K. Gamber	520
Jimmy Hickman	421
J. Andrew Horn	707
Brian Keith Hutchison	742
William G. Johnson	685
Martin C. Knuth	702
Douglas Eugene Kuhn	187
John LaBarbera	711
Dean Lewis	652

KSBTP Computation Of Credit Chart

See Kansas State Board of Technical Professions Rules and Regulations ARTICLE 14. CONTINUING EDUCATION REQUIREMENTS, (K.A.R. 66-14-1 through 66-14-12) (<http://www.kansas.gov/ksbtp/rulesregs.html>) for more information.

Description	Verification/Documentation	PDH Credit
1. Attending professional or technical presentations at meetings, conventions, or conferences.	Copy of certificate of completion. Must provide name, date, time, title and presenter's name.	Number of hours of actual time
2. Attending in house programs sponsored by corporations or other organizations.	Copy of certificate of completion or employee record signed by employer.	Number of hours of actual time.
3. Successfully completing seminars, tutorials, short courses, correspondence courses, televised courses or videotaped courses. (Self-study not acceptable.)	Copy of certificate of completion or other approved documentation. Signed and sealed AIA transcript accepted.	Number of hours of actual time.
4. Making professional or technical presentations at meetings, conventions, or conferences.	Agenda or employment letter showing instructor name and length of presentation.	4 times number of hours taught
5. Teaching or instructing (first time only). No credit for faculty teaching regularly assigned courses.	Bulletin, agenda or employment letter showing instructor name and length of presentation.	4 times number of hours taught
6. Authoring published papers, articles or books.	Title page with name and date of publication.	10 PDH per item
7. Actively serving as an officer or committee member of a technical profession society or organization.	Minutes showing attendance and participation for each year served.	Limit 2 PDH/year Per organization
8. One college semester hour of an approved course.	Copy of transcript.	45 PDH
9. One continuing education unit. (CEU)	Copy of CEU Certificate.	10 PDH
10. Mentoring one or more individuals preparing for licensure.	Mentoring Reporting Form on web page. (http://www.kansas.gov/ksbtp/1.B.Mentoring%20Form.pdf)	6 PDH/year
11. Surveyors shall have completed, as part of the 30 PDH required, at least two PDH of continuing education activity on the Kansas minimum standards adopted by reference in K.A.R. 66-12-1(c).	Copy of certificate of completion.	2 PDH

The Board of Technical Professions has final authority on approval of continuing education activities. (K.A.R. 66-14-5(b))

NCARB's 2010 Survey of Registered Architects

Washington, DC—The 2010 survey of state architectural registration boards by the National Council of Architectural Registration Boards (NCARB) indicates that there are currently 105,312 registered architects in the United States. Data was collected in August 2010 and reflects July 2009 through July 2010.

The 2010 survey also reveals that there are 116,340 reciprocal (out-of-state) architects, for a total of 221,652 registrations. This means, on average, an architect is registered in at least two different jurisdictions. California has the highest number of resident architects (17,156) and the highest number of total registrations (21,276).

NCARB collects data for the survey from its 54 Member Boards, which includes all 50 states, the District of Columbia, Guam, Puerto Rico, and the U.S. Virgin Islands. NCARB makes this information available annually as a service to the profession. For more information about the 2010 Survey of Registered Architects, contact NCARB at 202-783-6500.

ARCHITECT REGISTRATIONS BY JURISDICTION

Jurisdiction	Resident	Reciprocal	Total	Jurisdiction	Resident	Reciprocal	Total
Alabama	825	1,795	2,620	Montana	418	904	1,322
Alaska	249	352	601	Nebraska	594	1,244	1,838
Arizona	2,270	4,042	6,312	Nevada	584	2,590	3,174
Arkansas	511	1,077	1,588	New Hampshire	443	1,960	2,403
California	17,156	4,120	21,276	New Jersey	3,043	4,672	7,715
Colorado	3,111	3,707	6,818	New Mexico	710	1,374	2,084
Connecticut	1,428	2,639	4,067	New York	9,177	6,410	15,587
Delaware	121	1,417	1,538	North Carolina	2,347	3,135	5,482
Dist of Columbia	780	2,438	3,218	North Dakota	134	583	717
Florida	5,068	4,684	9,752	Ohio	3,200	3,163	6,363
Georgia	2,404	2,952	5,356	Oklahoma	760	1,303	2,063
Guam	30	75	105	Oregon	1,603	1,256	2,859
Hawaii	972	1,192	2,164	Pennsylvania**	3,483	3,645	7,128
Idaho	501	1,180	1,681	Puerto Rico	609	126	735
Illinois	5,610	3,920	9,530	Rhode Island	302	1,253	1,555
Indiana**	957	2,224	3,181	South Carolina	1,043	2,749	3,792
Iowa	466	1,188	1,654	South Dakota	102	687	789
Kansas	928	1,780	2,708	Tennessee	1,298	1,773	3,071
Kentucky	726	1,722	2,448	Texas	7,333	3,882	11,215
Louisiana	1,168	2,088	3,256	Utah	653	1,309	1,962
Maine	413	1,024	1,437	Vermont	321	836	1,157
Maryland*	2,637	2,435	5,072	Virgin Islands*	26	55	81
Massachusetts	3,666	2,965	6,631	Virginia	2,770	4,238	7,008
Michigan	2,606	3,188	5,794	Washington	3,955	2,290	6,245
Minnesota	1,898	1,658	3,556	West Virginia	100	1,047	1,147
Mississippi	334	1,446	1,780	Wisconsin	1,535	2,851	4,386
Missouri	1,819	2,762	4,581	Wyoming	115	935	1,050

Total Architects: 105,312 Total Reciprocal Registrations: 116,340 Total Registrations: 221,652

*Counts are estimates based on data from prior years.

**Counts from 2009 survey data.

KANSAS STATE BOARD OF TECHNICAL PROFESSIONS

900 SW Jackson Street, Suite 507, Topeka, KS 66612
www.kansas.gov/ksbtp • 785-296-3053

Continuing Education Guidelines

Required for Biennial Renewal of a License to Practice Architecture, Professional Engineering, Surveying, Landscape Architecture and Geology in Kansas

RENEWAL REQUIREMENT:

- Last names beginning with the initials A-L renew in even numbered years.
- Last names beginning with the initials M-Z renew in odd numbered years.
 - Architect Renewal deadline is June 30.
 - Professional Engineer deadline is April 30.
 - Surveyor deadline is March 31.
 - Landscape Architect deadline is December 31.
 - Geologist deadline is June 30.

BASIC RULES:

- Continuing education activity means an activity that enhances a licensee's level of technical, professional, managerial or ethical competence in order to further the goal of protecting the health, safety and welfare of the public. (K.A.R. 66-14-2b.)
- Each of the continuing education activities... shall meet all of the following criteria: (1) The activity has a definable purpose and objective. (2) The program is conducted by a person qualified in the subject area. (3) The licensee retains a record of registration and attendance. (K.A.R. 66-14-3b.)
- **Thirty (30) PDH (Professional Development Hours)** are required for each biennial renewal.
- New licensees are exempt from the continuing education requirement for their first renewal.
- Licensees in more than one profession need 20 PDH for each profession.
- Retain documentation for continuing education for four (4) years. Provide documentation to KSBTP only if licensee is in an Audit. (See Audit information below.)
- Carry-over hours are allowed. A maximum of 30 PDH may be carried forward into the next renewal period. Carry-over hours must be documented if audited.

SURVEYORS IN KANSAS:

Each Surveyor shall comply with two (2) PDH of continuing education on the KANSAS MINIMUM STANDARDS as adopted by reference in K.A.R. 66-12-1(c).

RESIDENT OF ANOTHER STATE:

If the licensee is a resident of another state, continuing education requirements may be satisfied if the licensee is currently licensed to practice in that state, and meets the continuing education requirements of that state. Licensee must provide proof of current licensure. If the state of residence requires no continuing education, the licensee must meet the Kansas requirements. Each surveyor shall comply with two (2) PDH of continuing education on the Kansas minimum standards as adopted by reference in K.A.R. 66-12-1(c).

RETIRED OR DISABILITY STATUS:

If Kansas licensee marks the renewal form as "RETIRED" or "DISABLED", the licensee cannot practice a technical profession in Kansas. In order to return the license to active status, a Return to Practice Application (on web site) must be completed. This application requires 30 PDH earned within 2 years of the date of the Return to Practice Application.

REINSTATEMENT:

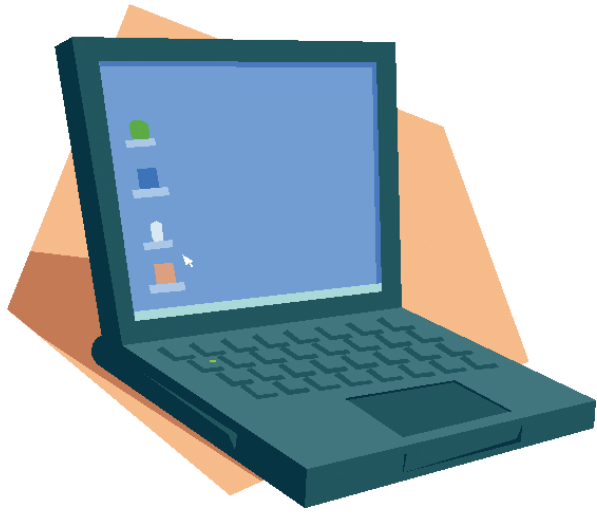
If a license is cancelled, a Reinstatement Application (on web site) must be completed. See Reinstatement application for more information.

MILITARY DUTY:

A licensee may request an exemption from continuing education due to active duty in the armed forces of the United States if serving a period of time exceeding 120 consecutive days in a calendar year. Licensee would be exempt for 15 PDH required only during that year. Contact the Board office for required documentation.

AUDIT INSTRUCTIONS:

- **Notification of audit will be mailed at licensee's renewal time.**
- **Licenses will not be renewed until audit is successfully completed.**
- **Records required for Audit: (1) Renewal form, signed and sealed, (2) CE log, signed and sealed, and (3) Certificates or other documentation of CE events (i.e. agendas; sign in sheets; course outline, but do not include payment verification materials).**
- **If PDHs are disallowed by the Board, licensee will have 120 days to substantiate the original claim or to earn other credit to meet the minimum requirement.**



Renew On line at:
www.kansas.gov/ksbtp/
Safe. Secure. Fast.

KSBTP Time Schedule for Reporting Continuing Education

Profession	Next Date To Renew Last Name Beginning		Dates to Earn Continuing Education For the Required Renewal Period	Expiration Date of current license	
	A-L	M-Z		A-L	M-Z
Surveyor	3/31/12		3/31/10-3/31/12	3/31/12	
		3/31/11	3/31/09-3/31/11		3/31/11
Professional Engineer	4/30/12		4/30/10-4/30/12	4/30/12	
		4/30/11	4/30/09-4/30/11		4/30/11
Architect	6/30/12		6/30/10-6/30/12	6/30/12	
		6/30/11	6/30/09-6/30/11		6/30/11
Geologist	6/30/12		6/30/10-6/30/12	6/30/12	
		6/30/11	6/30/09-6/30/11		6/30/11
Landscape Architect	12/31/10		12/31/08-12/31/10	12/31/10	
		12/31/11	12/31/09-12/31/11		12/31/11

Looking for Your Pocket Card?

KSBTP License Renewals will soon be underway for 2011. Licensees may renew online at www.kansas.gov/ksbtp. Look for the Renewal Notice in the "Bulletin Board Announcement" section of the web page. Licensees may print the license renewal confirmation, and also print a **pocket card** at the last step of the online renewal process. You will no longer have to wait to receive your card in the mail. Please remember, your **pocket card** can only be printed at this final step in the renewal process. If you were unable to print this page and still require a pocket card, please call the Board office at 785-296-4400.

Verification of your license can be done at any other time by using the Search feature on the Board's website, www.kansas.gov/ksbtp. Go to the section "**License Search for Individual or Business Entity**". The results of your search can be printed and submitted as proof of licensure with bids or for other times as proof of your current license status. When using this feature, remember the least data entered provides the best results. For example, use just the license number OR the last name, and check the appropriate box below.

IN MEMORIAM

The Board and staff wish to extend our sympathies to the families and friends of these individuals who have honored their professions:

ENGINEERS

Kenneth M. Blom	#5383	Kansas City, MO
Christopher M. Carrier	#11918	Wichita, KS
Donald G. Dressler	#6659	Gravois Mills, MO
Douglas W. Flatt	#3472	Topeka, KS
Scott M. Freye	#19554	Verona, WI
Melvin R. Hoffman	#978	Leawood, KS
Michael F. Kadlicek	#12079	Topeka, KS
Theo C. McCool	#13372	Norman, OK
R. G. Van Gundy	#1993	Salina, KS
Stephen Douglas Webb	#9794	North Fort Myers, FL
Ralph Lowe Young	#15039	Chapin, SC
Frederick Lee Zook	#12039	Pueblo, CO

ARCHITECTS

Donald L. Smith	#5500	Plano, TX
Robert E. Smith	#583	Wichita, KS

LAND SURVEYOR

Doyle G. Abrahamson	#1293	Estes Park, CO
---------------------	-------	----------------

As of 10/31/10

Douglas W. Flatt, P.E.

Douglas W. Flatt, P.E., passed away in peace on November 29, 2010. Doug was born June 11, 1929 in Fargo, North Dakota to Mike and Rea Flatt and grew up on the family farm in Sheldon, North Dakota. He graduated from North Dakota State University with a degree in civil engineering. After graduation he served as an officer in the U.S. Air Force. While stationed in Denver, he met Janet Higgins and they were married on August 2, 1953. Doug and Jan moved to Topeka, Kansas in the fall of 1954 to work on the design and construction of the Kansas Turnpike. He co-founded Cook, Flatt & Strobel Engineers, P.A. in 1961 and served as its president and CEO until his retirement. Doug was involved in many civic and professional organizations including an early version of the Kansas State Board of Technical Professions for four years from 1976-1979, serving as Chairperson in 1977. Doug's passions were his family, golf, being with friends and growing his business. He was both a devoted family man and a trusted business partner. Doug is survived by his loving wife, Jan; his children, Cathy Goodger (Tim), Lake Quivira, KS, Steve Flatt (Sherryll), Double Oak, TX and Tim Flatt (Laurie), Overland Park, KS; and six grandchildren.

Licenses Cancelled Due To Incorrect Addresses?

During the 2010 renewal cycle, the Kansas Board cancelled the following numbers of licenses:

- Landscape Architects—12
- Land Surveyors—18
- Professional Engineers—269
- Architects—113
- Geologists—19

All of these licenses were cancelled for lack of contact from the licensee. **How many of these licenses were cancelled because the individual did not receive either of the renewal notices mailed to him/her?**

K.S.A. 74-7025 requires all licensees to notify the Board within 30 days of any change of address. This applies to business address as well as home address.

Addresses can be changed at any time by going to our website, www.kansas.gov/ksbtp, and clicking the on-line change of address box. You can also change your address on-line if you do not have a social security number on file with our office.

Don't let your license get cancelled because you did not change your address with the Board and your renewal notice did not reach you.

Chris Carrier Left Mark On Kansas

Christopher M. Carrier, 62, Director of Public Works & Utilities for the City of Wichita, died Sunday, September 26, 2010. Carrier began working for the City in 1997 as Storm Water Utility Engineer and was appointed Public Works Director in 2005.

As the head of a newly-merged public works and water/sewer department, Carrier was responsible for 840 employees and a \$41 million operating budget. He oversaw projects that reduced flooding across the city, facilitated suburban growth and improved traffic in a city recognized for some of the nation's best commute times. Those projects included a \$105 million elevated rail corridor through the downtown core area, development of a landmark plaza featuring two cable-stayed bridges and a 75-foot statue by Indian artist Blackbear Bosin, continued expansion of the Kellogg (U.S. 54) freeway, and recovery from a 1998 flood event known as the Halloween flood.

A native of Newton, Kansas, Carrier also served in management positions for Dodge City, Newton, and Ford County, KS as well as positions in Shreveport, LA and Polk County, IA. He also worked in the private sector as a vice-president for D.C. Construction Corp. of Louisiana, and as a project engineer for Snyder & Associates.

Carrier had a bachelor's degree in civil engineering from the University of Kansas. Survivors include wife Sandra and nephew Walter Hanson of the home, son U.S. Army Captain Joe Carrier, daughter Jamie Wilhelm, and three grandchildren.